

## Engineered to work for your workforce.

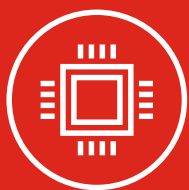
### INTRODUCING THE NEW LENOVO 14w NOTEBOOK WITH WINDOWS 10, BUILT FOR BUSINESS.

Empower your enterprise with the new 14w Notebook. This comprehensive device was designed with your firstline workers in mind. State-of-the-art features like a 720p front-facing camera and touch-screen display make it easier for employees to engage with consumers and represent your brand, all while managing their daily work tasks. And with the support of the Windows 10 platform, your workforce can easily access their devices in an office or on a factory floor. Every schedule, task, training and appointment managed in real-time with the help of apps like Office 365 and StaffHub. Plus, with Windows 10 advanced, ongoing security measures, you can rest assured that your fleet of devices will always remain protected. All-in, this powerful Notebook is packed full of features to better your business.



#### BUILT SMARTER, WORKS HARDER

Whether it be managing clients or mobilizing a workforce, the 14w is up to the task. Its innovative design provides a better user experience thanks to modern touches like a touch-screen display, BackLit keyboard and a versatile 720p front-facing webcam. Pair all that with a powerful 3 GHz A6 AMD® dual-core processor and you've got a Notebook that will excel in every work setting.



#### HIGH-QUALITY MEETS HEAVY DUTY

Smart and sturdy, the 14w is built to for even the most rugged environments. With innovative features like a water-resistant keyboard and anti-peel keys, this Notebook can handle the wear and tear of your workforce. Plus, with 11 hours\* of battery life, the 14w can last an entire shift on one charge, so your business never misses a beat.



#### THE WONDER OF WINDOWS 10

Simple, secure, familiar and efficient, the Windows 10 platform is in the business of doing business better. From easy IT management for all devices to thousands of Microsoft enterprise apps, seamless infrastructure integration and top-notch security, this all-encompassing platform provides cost-effective solutions and support for all facets of your business.



\*Based on testing with MobileMark 2014. Battery life varies significantly with settings, usage, and other factors.

## Lenovo 14w Enterprise

### PERFORMANCE

Processor	3 GHz A6 AMD® dual-core processor
Operating System	Up to Windows 10 Pro
Graphics	AMD® Integrated graphics
Memory	4GB, 8GB DDR4
Storage	64GB, 128GB eMMC, 128GB, 256GB M.2 SSD
Audio	3.5 mm Combo Audio
Battery	57 Whr battery, Up to 11 hrs*

### DESIGN

Display	14" FHD (1920 x 1080) TN & FHD (1920 x 1080) IPS Touch Option
Camera	720p
Dimensions	328 x 225 x 17.7mm, 12.91" x 8.85" x 0.69"
Weight	1.54 kg, 3.39 lbs
MIL-SPEC Standard	Yes
Keyboard	Full-sized, water-resistant (330 ml) with touchpad & mechanically anchored keys. Black-lit.

### CONNECTIVITY

Ports & Slots	1 x USC Type-C, 2 x USB 3.0, 1 x HDMI Combo mic / audio jack, Micro SD card reader, WiFi 802.11 AC (2 x 2), Bluetooth 4.2, Kensington lock slot
---------------	---

### LENOVO SERVICES

#### Warranty Upgrades

Onsite Service maximizes PC uptime and productivity by providing convenient, fast repair service at your place.<sup>1</sup>

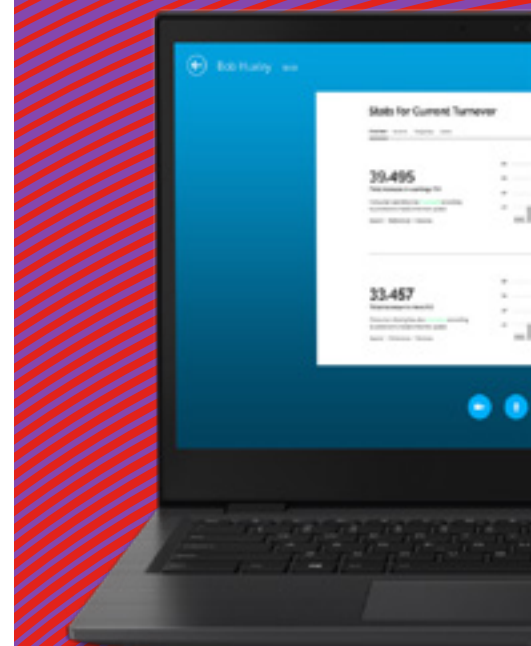
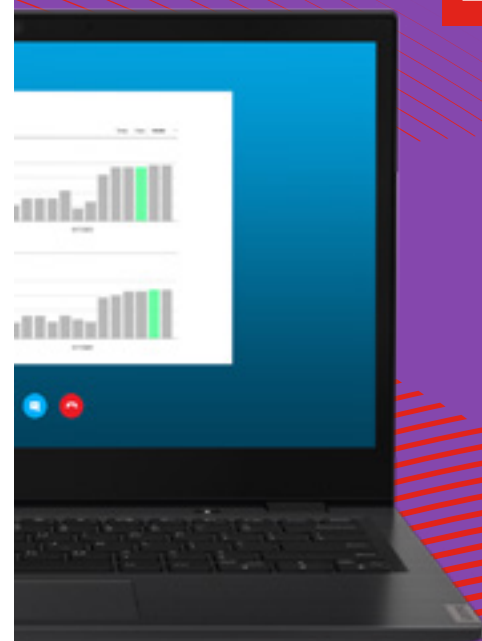
#### Warranty Extensions

This fixed-term, fixed-cost service helps you accurately budget for PC expenses, protect your investment, and lower the cost of ownership over time.<sup>1</sup>

#### Accidental Damage Protection

Protect your investment from operational or structural damage caused by common accidents like drops, spills, or electrical surges. This protection plan helps with predictable budgeting, minimizes unexpected repair costs and provides significant savings relative to the cost of non-covered repairs.<sup>1</sup>

1 Up to 3 years total duration



Lenovo

\*Based on testing with MobileMark 2014. Battery life varies significantly with settings, usage, and other factors.