

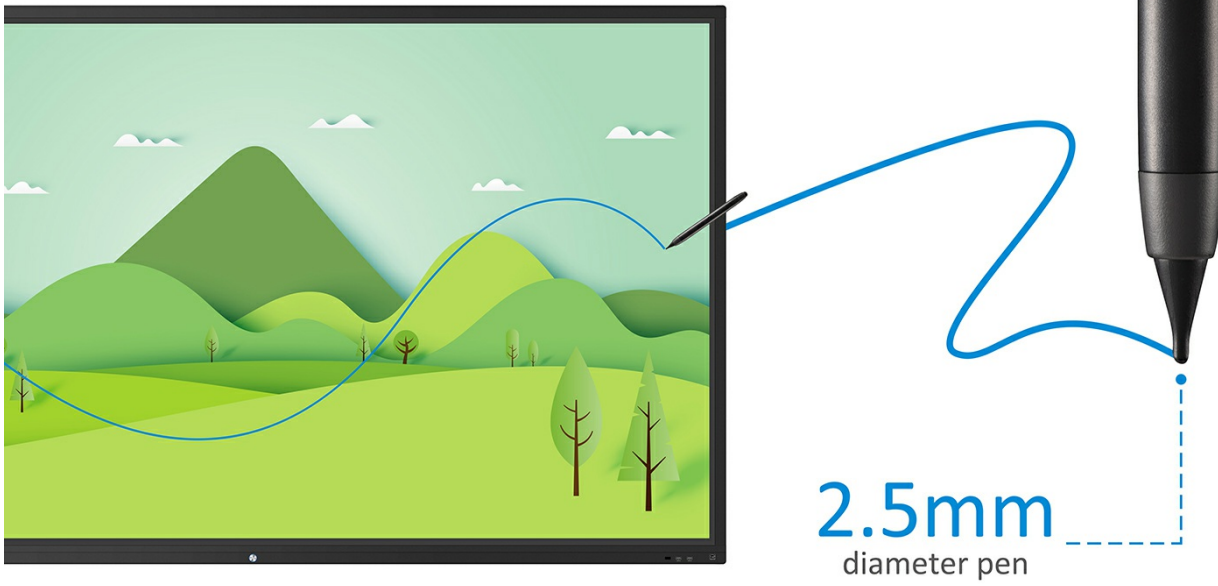


- UFT (Ultra Fine Touch) Technology
- myViewBoard™ digital whiteboard software
- ViewBoard® Cast 4-way split screen content sharing software
- SmartPort™ shared front USB ports for internal & external PCs
- 2.0 Stereo sound

The ViewBoard® IFP50 series embraces UFT (Ultra Fine Touch) Technology to offer more precise writing and faster processing time than traditional IR panels. Smooth, dual-pen writing with our new, slim 2.5mm pens enables groups of teachers and students to work efficiently on any detailed tasks that require the use of accurate, fine tipped pens. The ViewBoard® IFP50 series is designed with a slim bezel to broaden your viewing experience so that even at the edge you can write clearly and confidently. Integrated myViewBoard™ digital whiteboarding software allows users to collaborate on the go, while ViewBoard® Cast provides 4-way, split screen content sharing.

UFT Technology

UFT Technology enables precision writing with a 2.5mm diameter pen tip.



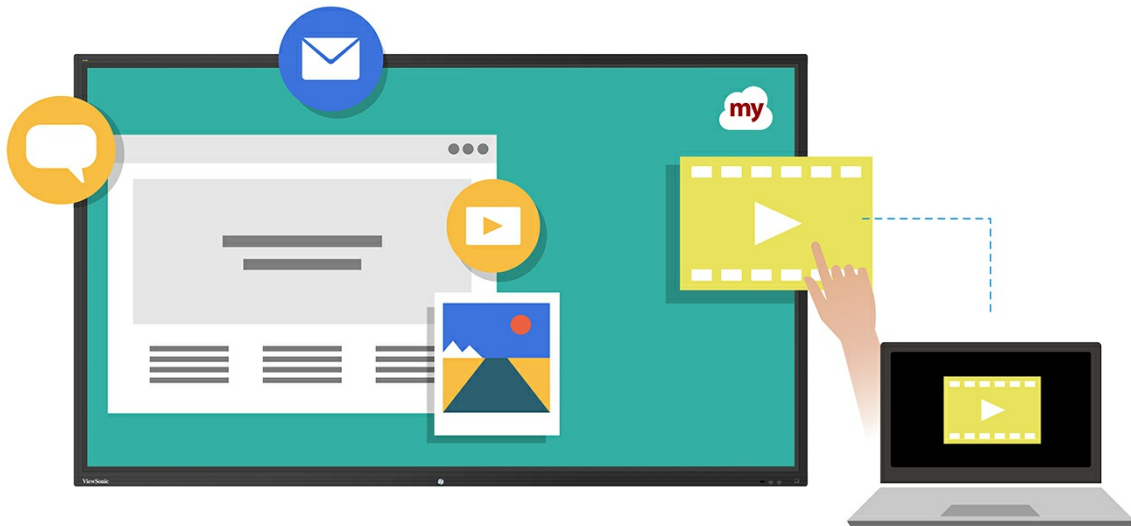
Dual-Pen

Automatically detect pen diameter (8mm & 2.5mm) and write simultaneously with different colours and thicknesses.



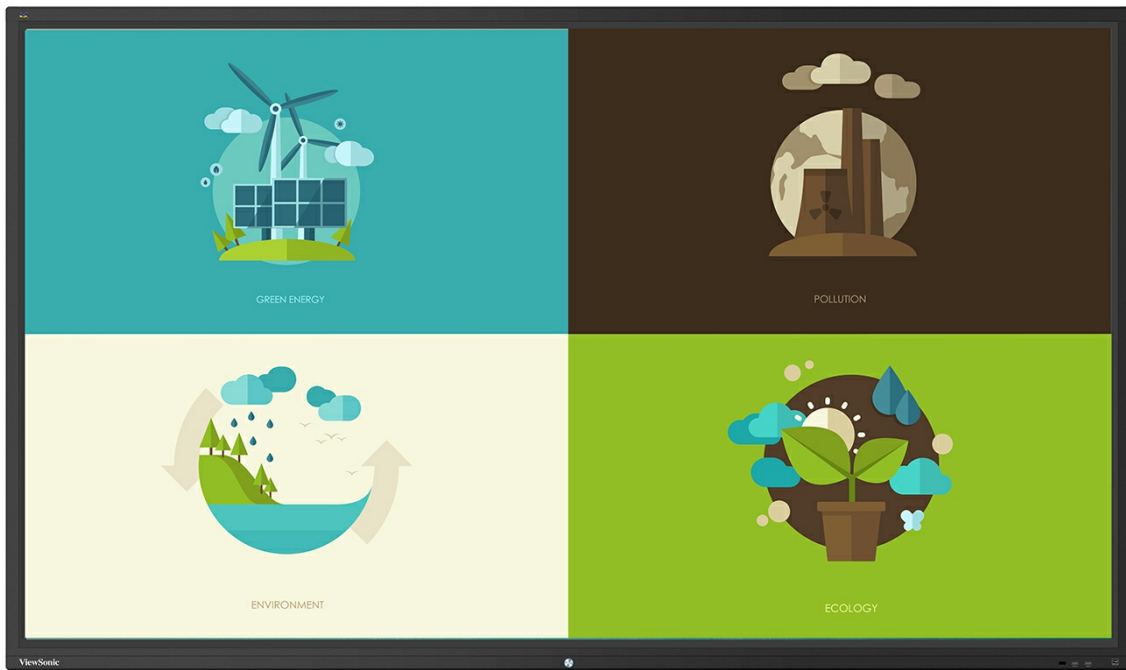
Full Native Performance on Android

Built-in myViewBoard™ digital whiteboarding software to collaborate on the go.



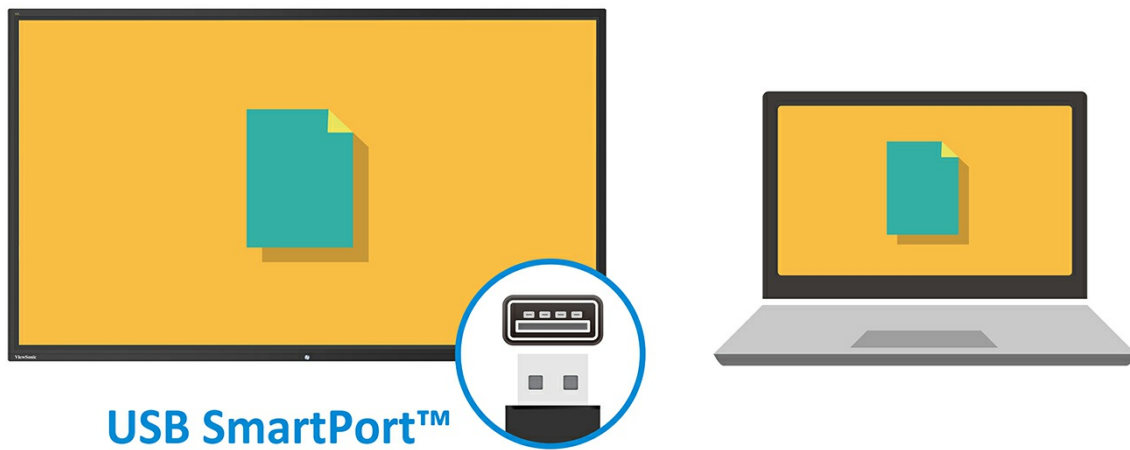
4-way Split Screen

4-way split screen content sharing with built-in ViewBoard® Cast software.



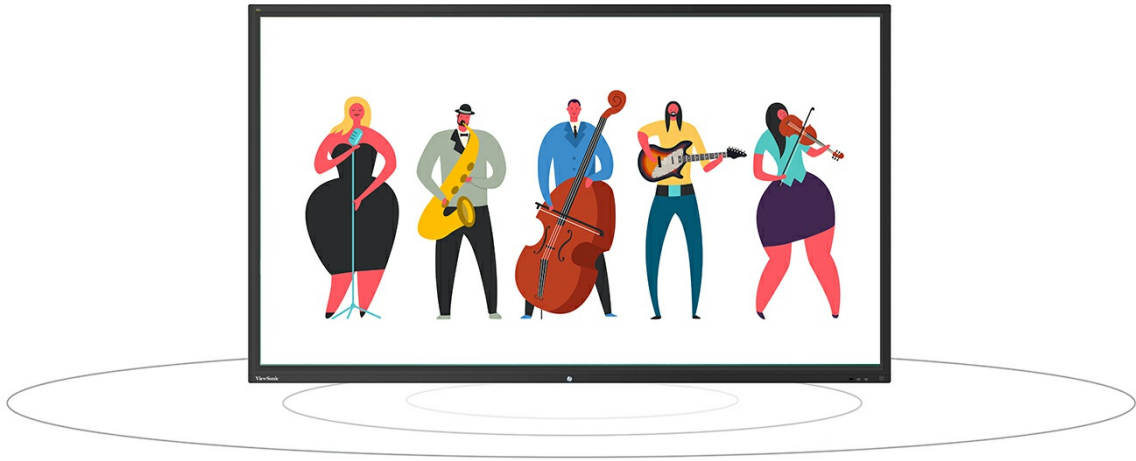
Shared USB Ports

SmartPort™ shared front USB ports for internal & external PCs.



Stereo Sound

2.0 Stereo sound



Faster Internet

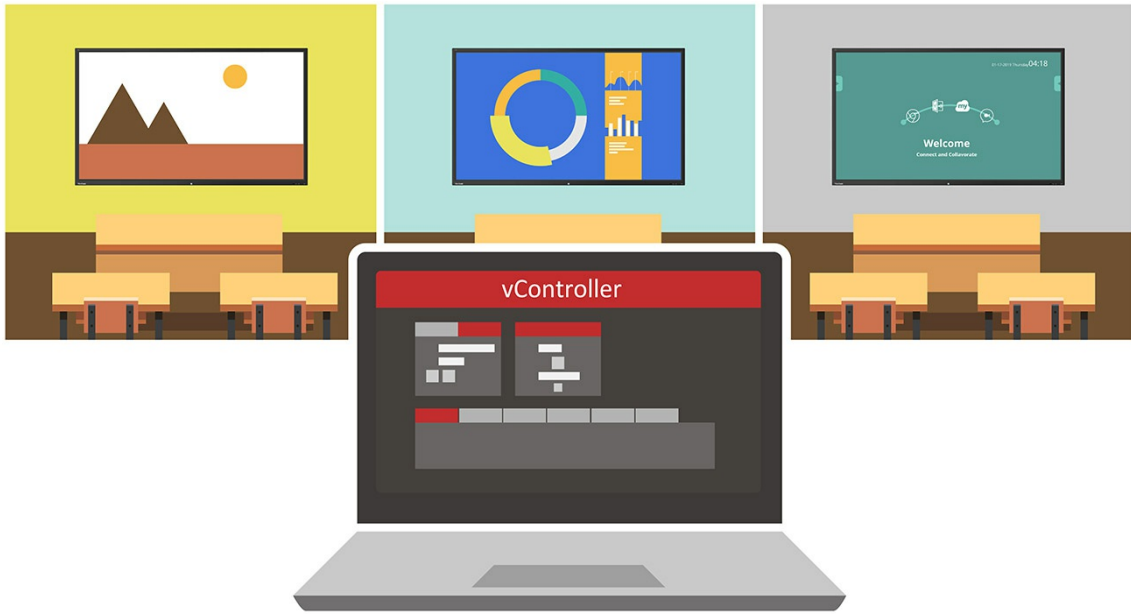
GigaLAN provides a faster, more powerful internet connection.

GigaLAN



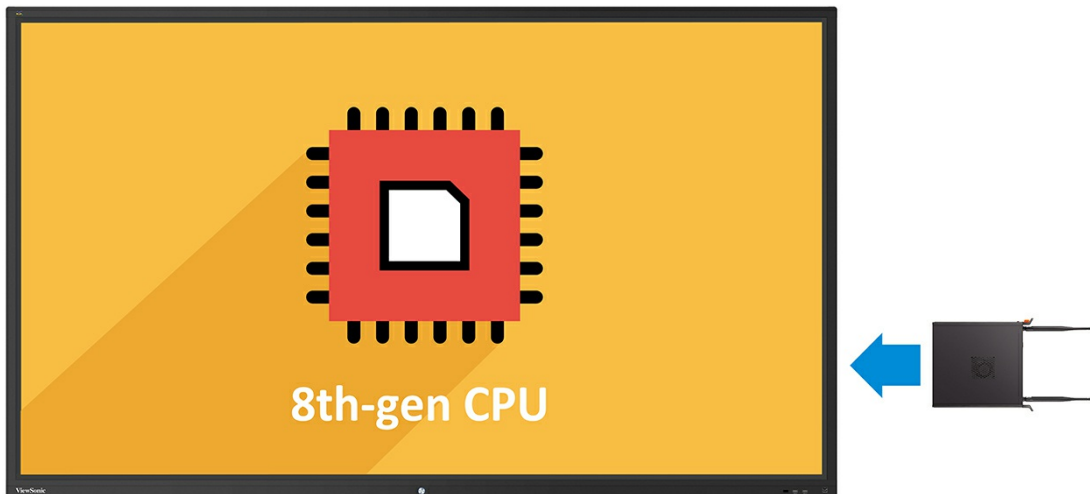
Remote Control

Built-in RS232 port and vController software for remote control.



Slot-in PC

Slot-in PC with Intel 8th-gen CPU (Optional).

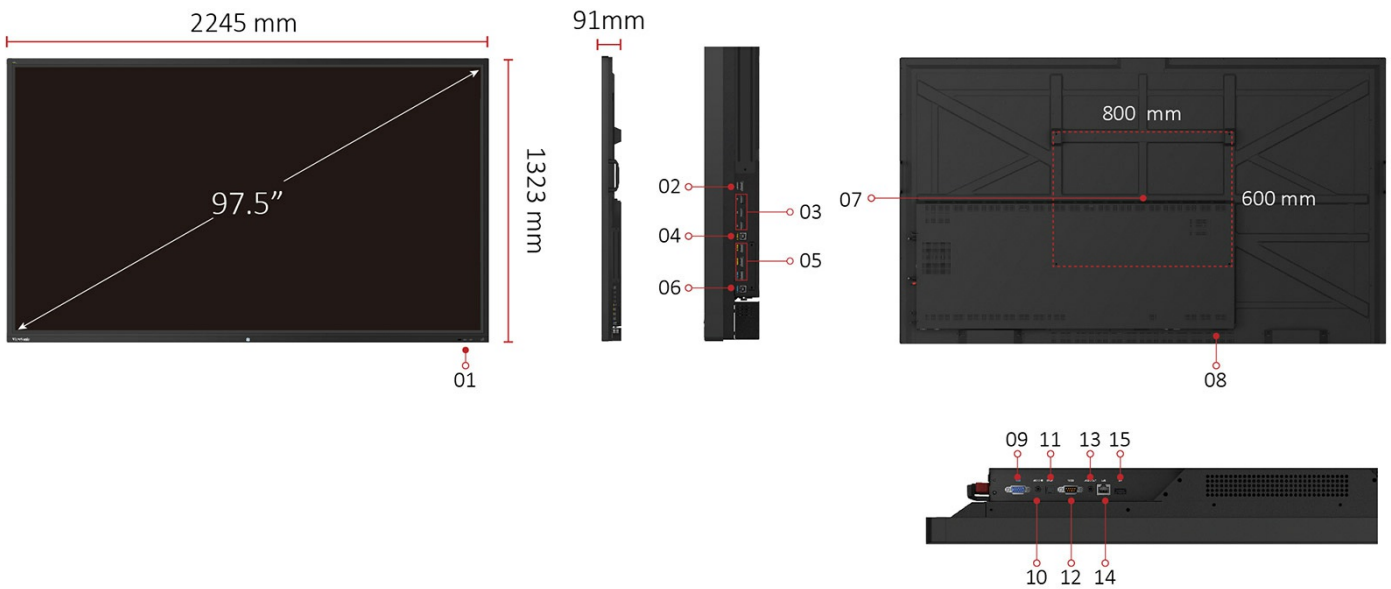


Web Camera

Top-mounted 1080p web camera (Optional).



I/O Ports



1. USB 2.0 X 2
2. HDMI OUT
3. USB 3.0 X 3
4. USB Touch Port
5. HDMI In X 3
6. USB Touch Port
7. VESA® WALL Mount 800x600 mm
8. AC IN
9. VGA
10. AUDIO IN
11. SPDIF Out
12. RS232
13. AUDIO OUT

- 14. LAN
- 15. USB 2.0

Technical Specifications

Display	Panel Size	98"
	Type/Tech	TFT LCD Module with DLED Backlight.
	Display Area (mm)	2171.85(H) x 1232.35(V) (97.52"diagonal)
	Aspect Ratio	16:9
	Native Resolution	UHD 3840x2160(Pixels)
	Colours	1.07B colours (10bit)
	Brightness	350 nits (typ.)
	Contrast Ratio	1200:1 Typ. , 5000:1 Max.
	Response Time	6ms
	Viewing Angles	H = 178, V = 178 typ.
	Backlight Life	30,000 Hours (Min)
	Surface Treatment	Anti-Glare
	Orientation	Landscape
Platform	Processor	ARM Cortex A73*2(1.5GHz)+A53*2(1.2GHz)
	RAM	3GB DDR4
	Storage	16GB
Touch	Type/ Tech	IR Recognition
	Touch Resolution	32767 x 32767
	Touch Point	20 points touch, 10 points writing
INPUT	HDMI	2.0 x3 (3840x2160 @60Hz)
	RGB / VGA	x1
	Audio	x1 (PC audio in)
	RS232	x1
	OPS	x1 PC Slot
OUTPUT	HDMI	x1
	Audio	x1 (Earphone out)
	SPDIF	1(optical)
	RS232	x1
LAN	RJ45	x1
USB	Type A	USB 2.0 x3 USB 3.0 x3
	Type B	x2, for touch
SPEAKERS	SPEAKERS	12Wx2
Camera plate on top for screw-in webcam installation	Camera plate on top for screw-in webcam installation	Yes

COMPATIBILITY	HDMI	3840x2160
USB SUPPORTED FILE FORMAT	USB SUPPORTED FILE FORMAT	<p>Picture - BMP, JPEG, PNG,GIF</p> <p>Video - Codec: H.263, H.264, MJPEG, MPEG2, MPEG4, RV30/40, VP6, Xvid-ASP Container: 3GP, ASF, ASX, AVI, FLV, M4V, MKV, MOV, MP4, MPG, MPEG, RMVB, TS H.265</p> <p>Audio - Codec: AAC, ALAC, FLAC, MPEG 3, Vorbis, WAV, WMA Container: AAC, APC, FLAC, M4A, MP3, OGG, WAV, WMA</p>
Bundle Software	<p>Basic Annotation Software</p> <p>Pro Annotation Software</p> <p>Wireless Presentation with Touch Feedback: Viewboard Cast</p>	<p>myViewBoard for android</p> <p>myViewBoard for windows (Embedded in Windows Slot-in PC)</p> <p>ViewBoard Cast</p>
Special Features	<p>All-in-one USB port (combine Windows/Android USB port; no need to distinguish them anymore)</p> <p>Simple LAN sharing between IFP and slot-in device</p>	<p>Front "SmartPort USB" to all channels.</p> <p>Yes</p>
Power	<p>Voltage</p> <p>Consumption</p>	<p>100-240VAC +/- 10% Wide Range</p> <p>171 (Typ.)</p> <p>< 0.5 W ("Off")</p>
ERGONOMICS	Wall Mount (VESA®)	800 x 600
OPERATING CONDITIONS	<p>Temperature (° C)</p> <p>Humidity</p>	<p>0°C to 40°C</p> <p>10% ~ 90% RH non-condensing</p>
DIMENSIONS (W x H x D)	<p>Physical (inch / mm)</p> <p>Packaging (inch / mm)</p>	<p>88.4 x 52.1 x 3.6 in / 2245 x 1323 x 91 mm</p> <p>97.8 x 58.8 x 14.8 in / 2483 x 1493 x 376 mm</p>
WEIGHT	<p>Net (lb / kg)</p> <p>Gross (lb / kg)</p>	<p>223.77 lb / 101.5 kg</p> <p>306 lb / 138.8 kg</p>
REGULATIONS	REGULATIONS	FCC, cTUVus
Energy Star version	Energy Star version	ES8.0
EEL rating	EEL rating	A++
PACKAGE CONTENTS	PACKAGE CONTENTS	1. Power cable(3 meters) x 4 2. Remote control 3. USB cable(3 meters) 4. Touching pen x 2 5. Quick Start Guide 6. RS232 adapter 7. Clamp x 5 8. Plate 9. Screw x 8 10. HDMI cable

Compatible Slot-in PC

Compatible Slot-in PC

VPC14-WP series

VPC10-WP series

VPC15-WP series

VPC16-WP series

VPC17-WP series

ViewSonic® Limited Warranty

ViewSonic provides customers with the security of a manufacturers warranty against defected products. The type and duration of the applicable warranty service varies by product type, country of purchase and can also vary on an individual basis according to customer requirements agreed at time of purchase. The warranty will expire after the end of the warranty period.

For more product information, visit us at **www.viewsoniceurope.com**

All rights reserved by ViewSonic Corporation. All other Corporate names and trademarks are the property of their respective companies. E&EO. All prices and specifications are subject to change without written notice. Images are for illustrative purpose only. Terms & Conditions Apply.