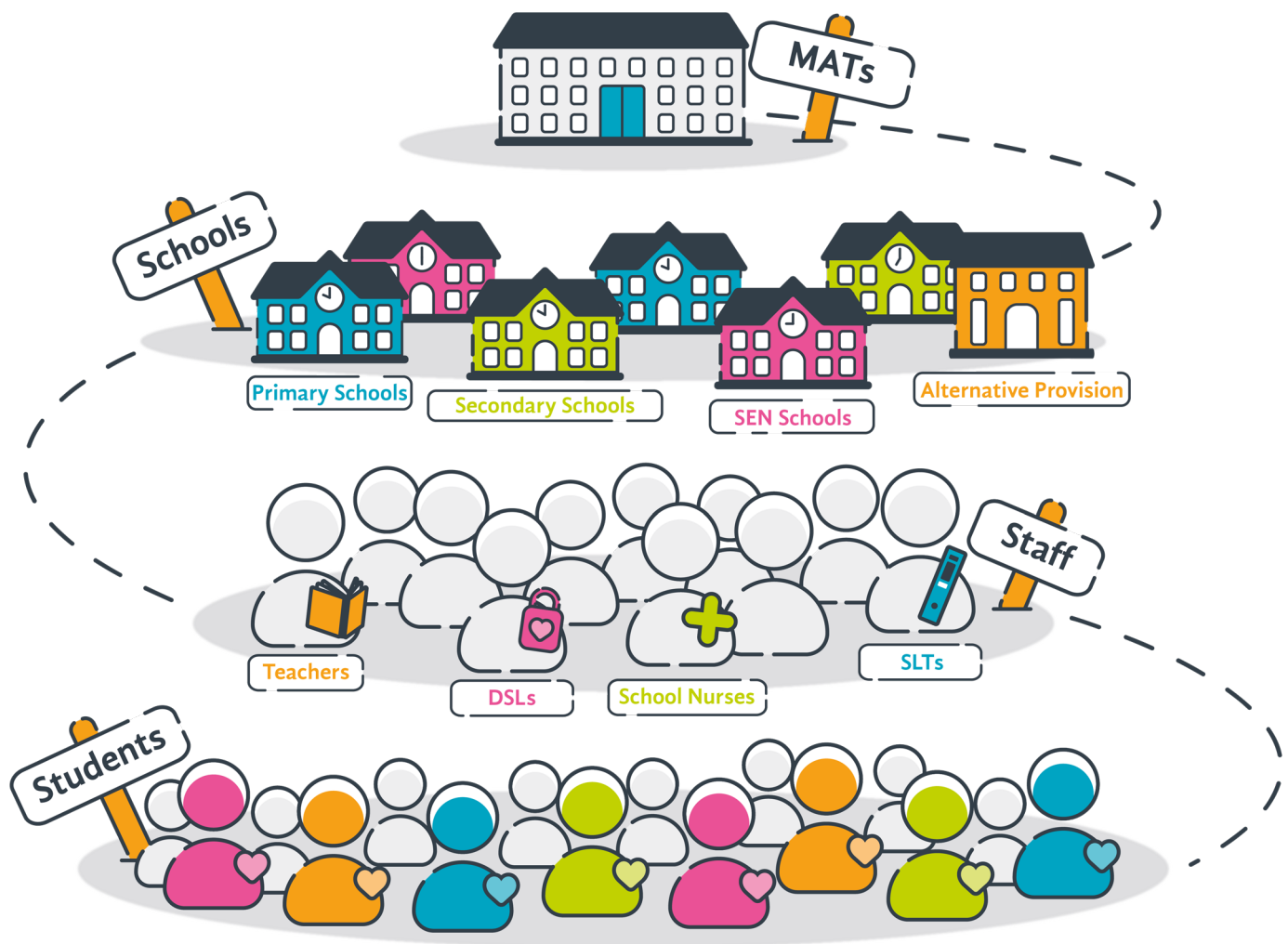








Supporting effective safeguarding and child protection practices

Impero EdAware is our safe and secure next-generation digital safeguarding system that provides a holistic view of every student's wellbeing. It's been specially designed to simplify the recording and management of safeguarding concerns in an education setting. Empowering schools and MATs to monitor and audit their safeguarding practices, and track safeguarding concerns in a central record, **Impero EdAware** helps to flag early warning signs, enable informed intervention and ultimately keep students safe.

Who do we help?



What makes Impero EdAware different?

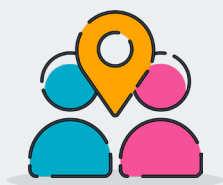
- | | | |
|--|--|---|
|  Records and analyses multiple risk factors |  Flags early warning signs and potential risk |  Is responsive to changing legislation |
|  Enables seamless integration between online and offline concerns |  Supports effective, informed interventions |  Provides a holistic view of student wellbeing |

The key features



Student profile

Have informed counselling sessions or behaviour management conversations, with a detailed background and demographic profile on each student. This gives you the context you need to intervene appropriately and make informed decisions concerning follow-up action.



Sibling tracking

Link sibling profiles for a complete picture of a student's background to identify common patterns or trends relating to the family's circumstances. Particularly useful if the siblings have different surnames or live at different addresses.



Staff training record

Maintain and evidence staff training with a complete and customisable log of certificates and assessments. Receive notifications when statutory training is due to ensure that staff stay updated on the latest safeguarding practices.



Concern chronology

Access a complete safeguarding history for each student, including pastoral, child protection, behavioural concerns, or mental health needs, as well as first aid incidents and medical needs. View detailed chronologies and printable reports, tag concerns on multiple students, and share concerns with school staff as appropriate.



Intervention management

Track and manage the follow-up action in relation to all incidents, detailing any external referrals made. This detailed log helps schools keep track of their interactions with external agencies, such as social care and CAMHS.



Granular reporting

Review intelligent, real-time dashboards that report at a student, school and MAT level to present insightful analysis of student risk and wellbeing across a whole school or academy trust. This allows schools to identify trends and flag key risk factors before they escalate.



Policy audit

Store and access over 100 safeguarding-related documents, such as key government legislation and memos, with links to templates and national guidance located in one place. Add and log your school's documents and policies, using the inbuilt audit tool to evidence your school's progress and compliance to inspectorates.



Alert prioritisation

Easily manage colour-coded alerts, grouped by priority and allocated staff members, for efficient follow-up and effective intervention management across the entire student body.



Health and safety tracking

Keep a record of various health and safety activities, including scheduled building and site checks, regular walk-around checks and annual reviews, with access to a log of building certifications, such as portable appliance testing (PAT) files and boiler servicing.



The key benefits



Intervene early

Combining a range of information across the whole scope of a student's wellbeing (from safeguarding and behaviour to first-aid and radicalisation) provides a complete visual picture and the insight that staff need to contextualise risk early, before the situation escalates.



Safeguard students

Providing visibility of all factors which influence student safety, including safeguarding concerns and risk indicators, staff responsibilities, school policies, and health and safety requirements, **Impero EdAware** enables schools to effectively track safeguarding concerns.



Oversee compliance

Impero EdAware places all essential and required documents in one place alongside a comprehensive audit tool, designed to enable schools to upload documents and supporting evidence for demonstrating compliance to relevant inspectorates, such as Ofsted and ISI.



Go paperless

With a digital record of all safeguarding incidents and concerns there is no longer a need for paper records of this nature. With ISO 27001 compliance and two factor authentication, **Impero EdAware** ensures this data is safe and secure and, unlike paper-based storage, protected from loss or physical damage/destruction.



Save time

Pinpointing appropriate documents on key legislation or policies can not only take time out of the staff member's day, but it also slows down the process of raising alerts for specific safeguarding issues. A browser-based solution, **Impero EdAware** gives staff access anywhere, anytime and on any device, so essential documents can be accessed easily.

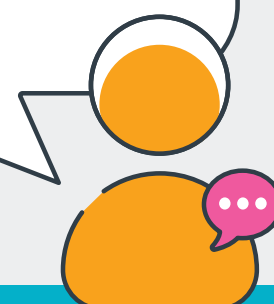


Simplify referrals

Providing school staff with an easy-to-use platform for reporting and recording safeguarding and behavioural concerns, with centralised referral tracking and automated generation of referral forms for timely student and family support. All evidence regarding a student's welfare can be collated and used for referrals to relevant external services where needed.

*"Having all safeguarding concerns and actions tracked in one place allows our schools to be more efficient and effective towards the care and protection of vulnerable children across the network. It has been an absolute positive change for safeguarding by investing in **Impero EdAware**. The team is highly knowledgeable and understand the practices and processes required to provide an efficient system to support schools in their day-to-day safeguarding."*

Joycelyn Thompson, Head of Safeguarding at Ark Schools





Bridging online and offline concerns for a complete picture of student wellbeing

Young people no longer differentiate between the online and offline worlds. Using **Impero EdAware** alongside Impero's online safety module, **Impero EdProtect**, provides a holistic approach to managing safeguarding incidents and risk indicators - whether they occur in the physical world, the digital world, or both.

impero
edprotect



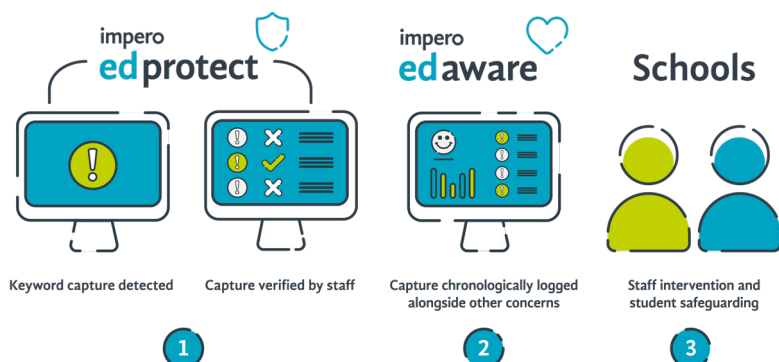
How Impero EdProtect works

Impero EdProtect identifies key words, phrases, abbreviations or acronyms, which are typed, used or viewed anywhere on the network (including HTML, web browsers, emails, applications etc). This helps to pinpoint vulnerable students potentially engaged in at-risk activity.

Our inbuilt keyword libraries have been developed in partnership with a number of charities and specialist organisations and provide definitions relating to a broad range of safeguarding issues.

How Impero EdProtect integrates

Risks captured in **Impero EdProtect** are pushed into the **Impero EdAware** system and recorded as a safeguarding concern. **Impero EdProtect** and **Impero EdAware** are designed to work seamlessly, so schools can view both offline and online risks in a single view.



The benefits of an integrated approach



Better trend analysis

A complete holistic view of all recorded online and offline safeguarding incidents enables schools to run reports with various filters, such as by cohort, to identify any specific trends or patterns of risk in safeguarding concerns.



Better contextual insight

With all concerns recorded in one place, including detailed information about flagged online incidents, schools can consider concerning online activity in line with a student's wider offline behaviour – so that staff can respond to safeguarding and child protection concerns appropriately with all pieces of the jigsaw.



Earlier intervention

Often risk manifests itself in the online world long before it becomes an issue in the physical world - with **Impero EdAware** and **Impero EdProtect** integration, these warning signs can be detected early.