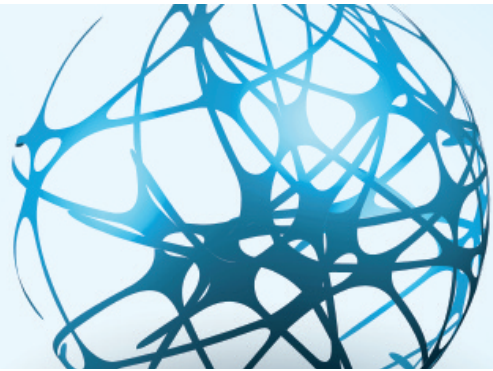


# ABBYY FlexiCapture®

## Enterprise Capture Platform



### Capture Documents at the Speed of Business

Many organisations still rely on paper for transactional business processes and often require time-consuming and labour-intensive manual operations to handle these documents. Solutions based on the innovative ABBYY FlexiCapture platform help organisations streamline their document-based processes through automated extraction of data for use in a variety of downstream business systems. Organisations working with high-volume data capture solutions based on FlexiCapture can drive efficiency, address compliance needs, and gain better access to key data from a variety of document types ranging from mortgage documents, to tax returns, questionnaires, contracts, invoices, customer mail and more.

### Benefits

#### Maximise Resource Use

Organisations can increase their efficiency by eliminating time-consuming, error-prone and expensive manual processes such as document pre-sorting and manual keying of data.

#### Increase Competitiveness

Automated document processing helps increase the responsiveness and speeds up the reaction times to customer enquiries. Documents do not sit on the desks of employees waiting for action but will be processed immediately.

#### High-quality Data Output

Organisations benefit from higher quality data output in the format they require, which means less time and resources spent validating work and better, more reliable data deposited into back-end systems.

#### International Data Capture

International companies benefit from implementing a solution to process multinational business documents. FlexiCapture can deal with text in more than 180 languages.

#### Meet Compliance Requirements Efficiently

Utilising ABBYY FlexiCapture solutions helps modern organisations to comply with security policies. The early visibility of a document entering an organisation, monitoring and statistics allow businesses to incorporate audit trails of the complete document handling process.

#### Reduced Operating Cost

Automated document capture helps organisations stay lean and competitive through optimised processes and reduced costs for manual keying of data and document handling.

### Automate Document Driven Business Processes

Although different industries have particular business processes and regulations, they all share the need to efficiently access data from paper. The ABBYY FlexiCapture platform can be extended with business-ready add-ons designed to automatically process forms, invoices and incoming communication in mailrooms.

#### Forms Processing

Extract hand printed information and barcodes from surveys, applications and order forms and classify multiple form types.

#### Digital Mailroom

Automate classification of incoming customer documents and speed-up time to customer response. Fast and reliable classification of multi-channel mail input, automatic sorting of scanned pages, analysis of a repository and creation of clusters of similar documents.

#### Invoice Processing

Handle incoming invoices across multiple stages of the accounts payable process – from digitisation and classification of invoice documents, extraction, checking and validation of key data, to the release and final deposit of invoice data into accounting, ERP or other backend systems. The solution offers built-in country-specific settings and validation rules for invoices, and the flexibility to be easily adapted to particular business needs and future changes.

### PLATFORM HIGHLIGHTS

- Enterprise Capture platform for processing any kind of document
- Classification of the incoming document stream
- Completely web-based capture workflow for distributed capture and verification scenarios
- Custom modules for integration of third-party components
- Customisable capture workflow that allows processing of paper, fax and e-mail
- Integration into line of business applications
- Early and clear visibility of any incoming document
- Better regulatory compliance through monitoring and reporting

The ABBYY FlexiCapture platform already delivers a range of powerful features out-of-the-box. To solve specific business requirements, FlexiCapture can be customised. FlexiCapture Solution Partners perform a partner-enabled vertical solution development to address the specific needs of different industries.



## FlexiCapture Enterprise Capture Platform

ABBYY FlexiCapture is a highly scalable Enterprise Capture platform for converting streams of documents into business-ready data. FlexiCapture is available in three different variants including a workgroup based variant for departments, a client-server based capture platform for distributed data capture in large organisations or as a server component for integration within custom-built applications. FlexiCapture scales with specific needs from low volume data capture based on a Standalone installation to high-volumes in a distributed client-server solution. FlexiCapture is available as follows:

	Standalone	Distributed	Server
<b>Architecture</b>	Desktop/Workgroup	Client-Server	Server Component
<b>Usage</b>	Small organisations	Medium to large enterprises	High-volume projects for BPOs
<b>Components</b>	All tasks handled on a desktop machine (local operations)	Capture platform for scanning, recognition, validation, and release (remote operations and Web Capture Workflow)	Capture component for centralised and automatic processing of documents (server-based)
<b>Deployment</b>	Desktop installation (One Administrator only)	Client-/Server solution with multiple components and for task distribution between servers and stations (Operator, Setup, Administrator)	Capture server installed in a network or integrated into a business workflow
<b>Scalability</b>	Limited by desktop workstation	High scalability based on Client/Server architecture	High scalability
<b>Distribution</b>	Operated only on physical machine or virtual environment	Servers can be installed in a virtual environment, client operator stations can be accessed via the web browser	Operated only on physical server or virtual environment

## Scalable. Flexible. FlexiCapture

Whether you require a desktop solution to handle lower volumes of documents or an Enterprise Capture platform to automate processing of the full range of business-critical documents your organisation deals with, FlexiCapture has the flexibility to address your needs.

### Data Capture and IDR in one Solution

From simple document capture via extraction of data from fixed forms to intelligent document recognition from semi- and unstructured documents, FlexiCapture is your all-in-one solution.

### Distributed Capture

Allows simple integration of de-centralised workforces or outsourcing service providers through web-based stations for scanning and data verification. Through add-on modules for mobile capture, your organisation can leverage on document capture using smartphones and tablet PCs.

### Any Kind of Document

Process any kind of business document, such as applications, claims, order forms, invoices, and unstructured customer communication like letters or contracts on one platform.

### High Scalability

Client/Server solution for processing high volumes with no limits on speed and high availability through Failover Cluster support. Advanced load balancing distributes resource intensive tasks to the processing stations, allowing you to scale the solution as your document processing needs increase.

### Flexible Integration

Custom modules, enhanced scripting and custom export features allow FlexiCapture to be integrated into any business application, whether for mailroom, invoices, or simple forms processing.

## About ABBYY

ABBYY is a leading provider of text recognition and document conversion technologies and services. Its versatile product portfolio for document processing and information retrieval is available on various platforms and devices. ABBYY offers a broad range of solutions designed for specific business and industry needs. Organisations all over the world rely on ABBYY solutions to optimise their paper-intensive business processes.

More information on [www.ABBYY.com](http://www.ABBYY.com)



**ABBYY Europe GmbH**  
Eisenheimerstr. 49  
80687 Munich, Germany  
Tel: +49 89 69 33 33 0  
sales\_eu@abbyy.com  
[www.ABBYY.com](http://www.ABBYY.com)

#### Regional Contacts

**UK & Ireland**  
sales\_uk@abbyy.com

**France**  
sales\_france@abbyy.com

**Spain & Portugal**  
sales\_es@abbyy.com

**Italy**  
sales\_it@abbyy.com

**Benelux**  
sales\_benelux@abbyy.com

**Nordics**  
sales\_nordic@abbyy.com