


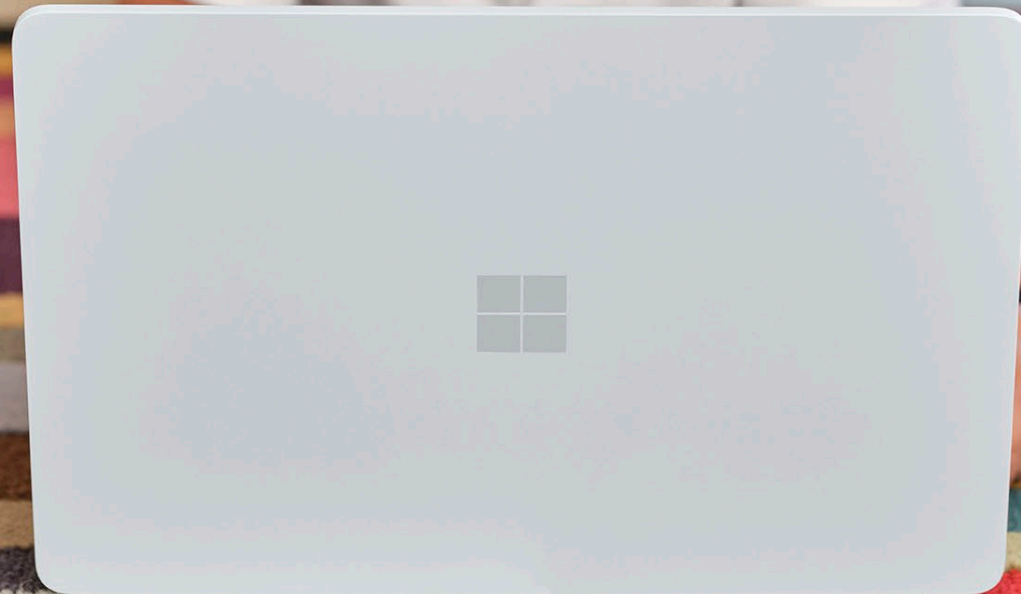
Surface Laptop SE for Education





Introducing Surface Laptop SE for Education

Give students a clamshell device that unlocks learning and new skills with Microsoft 365 for Education, including easy-to-use web experiences. Surface Laptop SE brings value to schools and IT admins that demand secure, premium experiences for students while providing easy deployment and management.





New expectations for education technology

Mixing remote learning with traditional in-person education, blended and hybrid learning create unique challenges for your school.



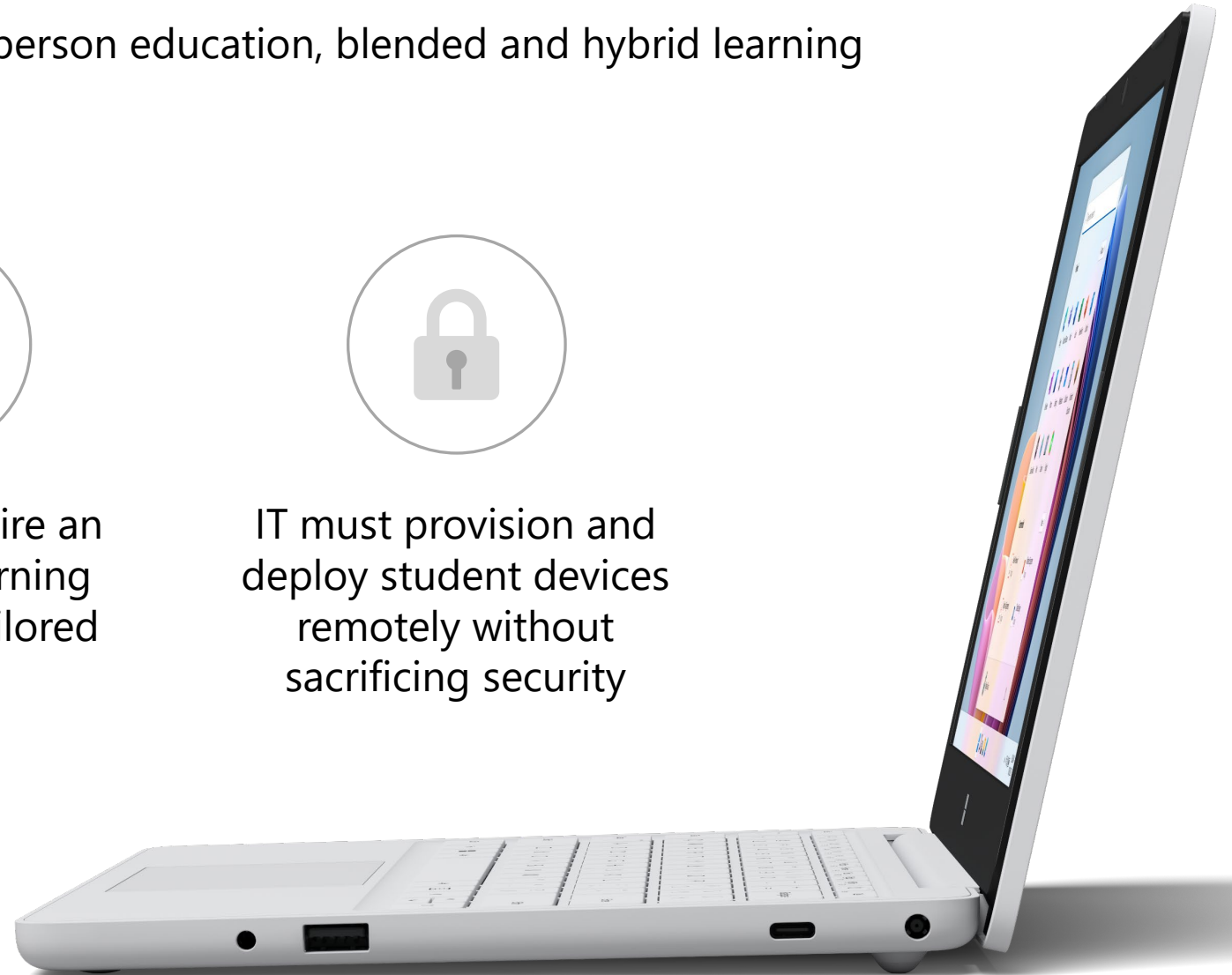
Schools need to provide students with high-quality devices for remote access



Students require an engaging learning experience tailored for them



IT must provision and deploy student devices remotely without sacrificing security



Provide flexibility and value with Surface Laptop SE

Surface Laptop SE gives students the engaging blended and hybrid learning experience they need at an affordable cost.



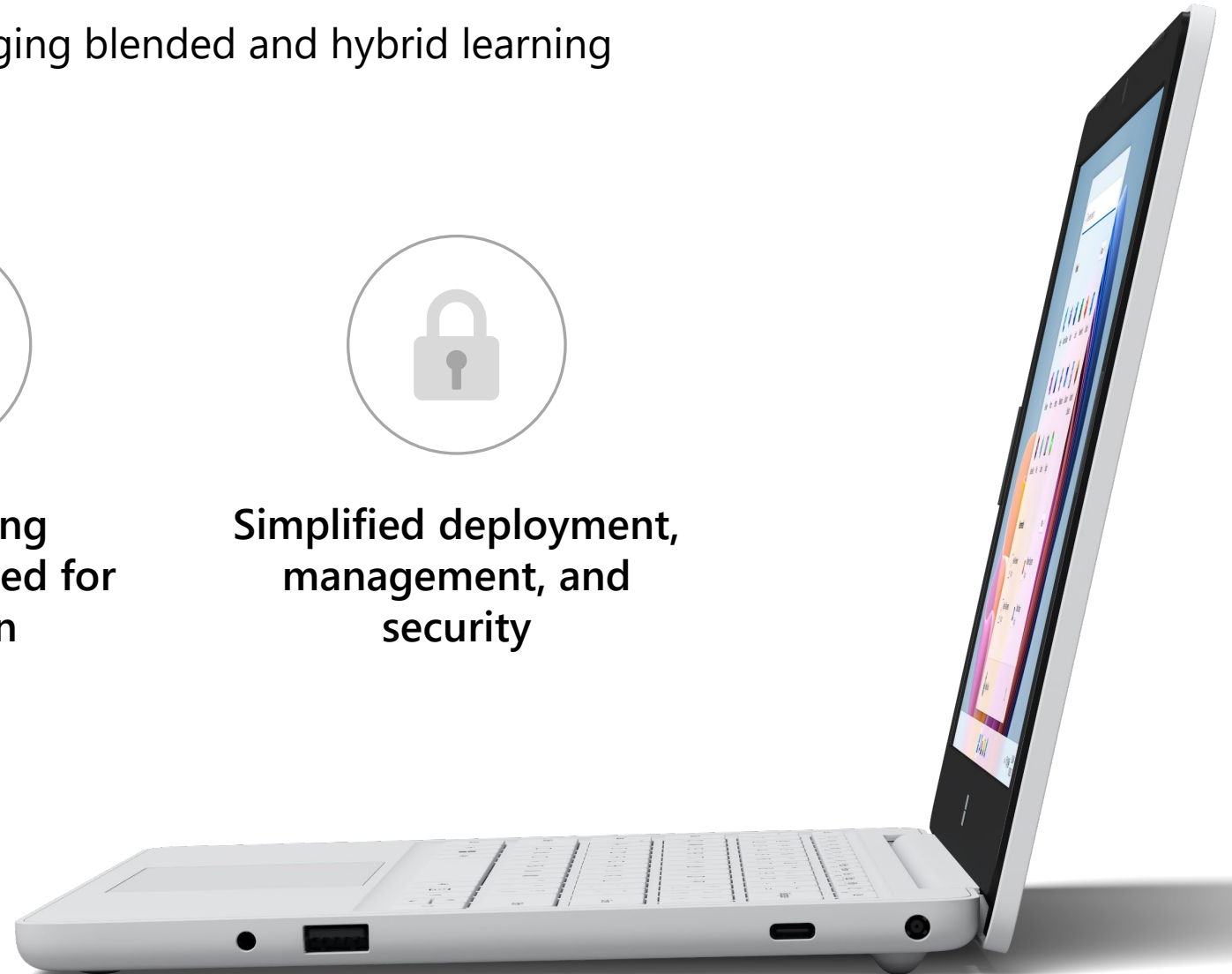
**Optimized for
blended learning
and hybrid learning**



**An operating
system designed for
education**



**Simplified deployment,
management, and
security**



A student's day in the life with Surface Laptop SE

Kayla needs to check if play rehearsals are starting, so she opens her **Surface Laptop SE** and signs in to her profile.



8:00 AM

Kayla checks the play schedule in **Microsoft Edge** and places her class calendar on the other half of the screen with **Snap Assist**.

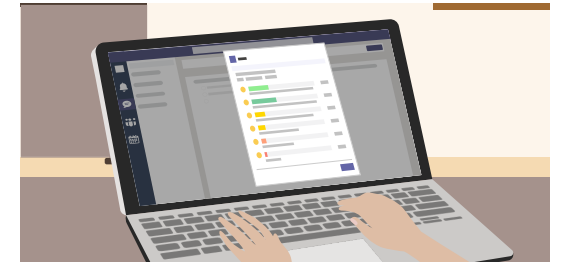


During class, Kayla takes a math quiz in **Microsoft Teams**, which automatically launches in full screen to support focusing.

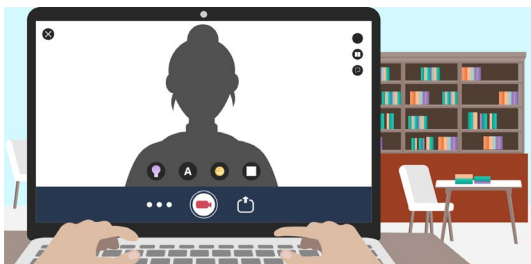


10:00 AM

At the end of math class, Kayla uses **Reflect in Teams** to say how she's feeling about the day's lesson.

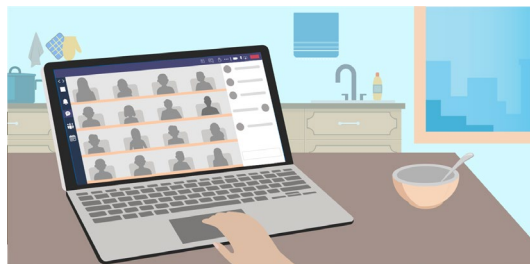


During study hall after lunch, Kayla records a quick video in **Flipgrid** to answer the prompt her history teacher posted.

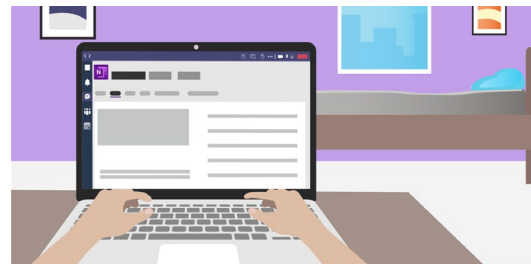


Noon

Kayla's parent picks her up early, so she joins class from home. **Surface Laptop SE** helps her be seen and heard clearly.



After class, Kayla uses **Immersive Reader** in her **OneNote Class Notebook** to read an assigned passage more easily.



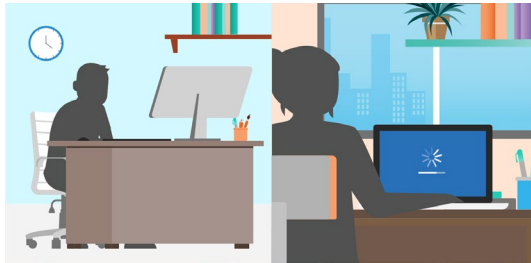
2:00 PM

Kayla explores the world of **Minecraft: Education Edition** and completes the lesson her teacher assigned.



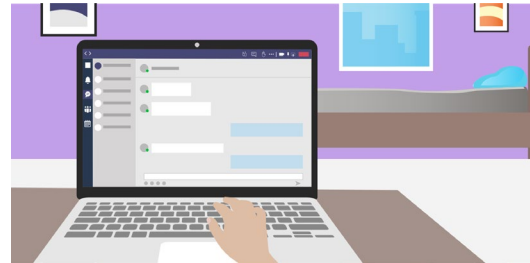
An IT admin's year in the life with Surface Laptop SE

Mr. Turner remotely configures Surface Laptop SE devices for the new fourth grade class using **Windows Autopilot**.

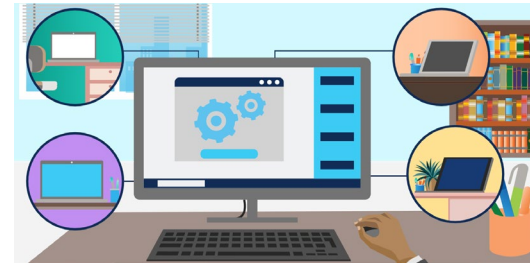


September

When students first power on their devices, **Windows 11 SE** is already set up with the correct apps installed.

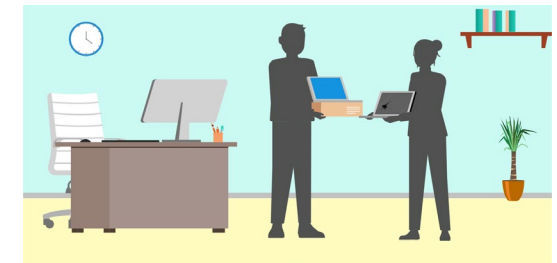


Mr. Turner uses **Microsoft Intune** to push out an OS update to Surface Laptop SE devices across the school.



November

A couple students crack their Laptop SE screens, so Mr. Turner deploys new devices using the students' cloud identities.

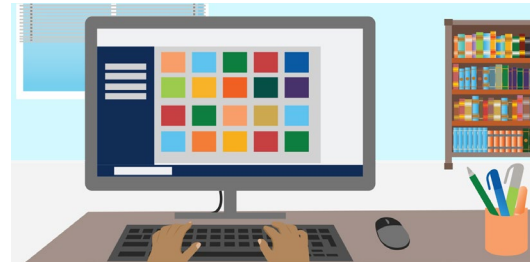


According to Laptop SE's Microsoft warranty, Mr. Turner receives the repaired devices for new students to use.¹

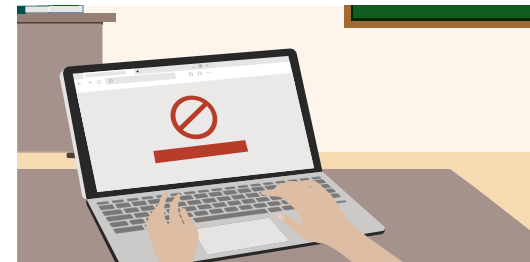


January

Teachers begin requesting a new test proctoring app, so Mr. Turner remotely installs the app on all student devices.

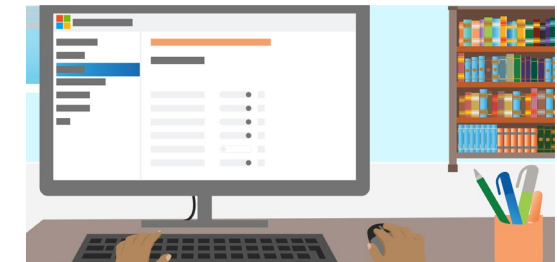


Some students receive an email with a link to a website with malware, but **SmartScreen** prevents the site from opening.




March

After students turn in their devices, Mr. Turner resets them for the next school year using **Microsoft Intune**.



¹ Repair time may vary. Depending on your service-level agreement, the timeline illustrated here may not reflect actual repair time for Surface Laptop SE.



Optimized for blended and hybrid learning


A slim and sleek classic laptop, Laptop SE brings the highly-regarded design of Surface to a budget-friendly device.

Power your creativity, ideas, and productivity throughout a full school day with long battery life.¹

With an Intel Celeron processor and modern eMMC storage, apps and files will load and run quickly.

Hear, be heard, and put your best face forward in virtual class sessions with a 720p HD camera, digital mic, stereo speakers, and high-res 11.6" display.

Get connected with USB-C™ and USB-A audio jack ports for connecting to displays, docking stations, and more, as well as accessory charging.



The high-quality experience students need at an affordable cost.

1. Battery life varies significantly based on usage, network and feature configuration, signal strength, settings and other factors. See aka.ms/SurfaceBatteryPerformance for details.





An operating system designed for education

Windows 11 SE optimizes performance with curated, education-first apps designed to run well on budget-friendly devices.

Get the best of Microsoft—including Teams, Office 365, and Minecraft Education—to help students build skills they'll need for the future.¹

Make learning accessible for students of varying disabilities with accessibility tools and apps for learning, vision, hearing, mobility, and neurodiversity.

Enjoy a streamlined environment designed to improve focus and enable student learning, with downloads and deployment managed by IT.¹

Enable access to files and productivity apps both online and offline in Office 365.¹

The best of Microsoft and Windows, streamlined for students.



¹. Requires qualifying Microsoft 365 or Office 365 license; sold separately.

Introducing Windows 11 SE



Education experiences designed for all

- Enhance **student focus** with streamlined Start Menu and windowing
- Find **recent files and tools** quickly and intuitively in Start
- Benefit from integrated **assistive technologies** at no extra cost
- Use **your voice** to access files and apps or turn ideas into text
- Enable Ease of Access settings to **minimize distractions**
- Enjoy a browser with **built-in learning tools** and easy organization

Simple to deploy, manage, and secure

- Control **downloads and apps** with IT-only access
- Benefit from powerful, built-in, always-on **security and threat protection**
- Help **defend against unsafe web content** with Windows Defender SmartScreen
- Get **low-touch deployment and management** via the cloud with Windows Autopilot and Microsoft Intune¹
- Enable single sign-on, **protect identities**, and lock down unsafe apps with Azure Active Directory

Optimized performance for low-cost devices

- Get the optimal experience **online and offline** with pre-loaded Microsoft 365 apps¹
- Enjoy a **streamlined environment** designed to improve focus and tuned to provide only the key apps that enable learning
- Integrate with familiar **third-party apps** such as Chrome and Zoom



1. Requires qualifying Microsoft 365 or Office 365 license; sold separately.



Simplified deployment, management, and security

Complete low-touch deployment for new devices using Windows Autopilot, easily applying policies and installing apps.

Manage devices remotely with Microsoft Intune,¹ including app management, security controls, and compliance reports.

Lock the operating system with lid-lock when the laptop is closed, and control physical access with the integrated Kensington Nano Security Slot™.

Microsoft Endpoint Manager and DFCI support secure device updates and management to the firmware layer, including elements such as mics, USB ports, cameras, and Bluetooth.

**Streamlined
remote
imaging and
management.**

1. Requires qualifying Microsoft 365 or Office 365 license; sold separately.



Warranty and protection plans

Standard limited hardware warranty

- One-year warranty for hardware defects and malfunctions
- 90 days of technical support for preinstalled software from experts at Microsoft
- Ongoing technical support, including the option to contact Microsoft Support with your questions even after your warranty runs out (fees may apply)
- Re-deploy repaired devices automatically without re-enrolling
- Access to Microsoft's robust online support articles and community

Additional protection may be purchased:

- Cover your device longer and protect against unintended mechanical failure with Microsoft Extended Hardware Service
- Cover your device against damage caused by accidents, including cracked screens, spills, and power surges with Microsoft Complete for Business

| | Manufacturer Hardware Warranty | Microsoft Extended Hardware Service | Microsoft Complete for Business |
|-------------------------------|---------------------------------------|--|--|
| Plan duration | 1 year | Up to 2, 3, or 4 years | Up to 2, 3, or 4 years |
| Price | Included with purchase | Starts at \$19 for 2 years | Starts at \$49 for 2 years |
| Availability | Starts day of Surface device purchase | May be purchased within 45 days of Surface device purchase | May be purchased within 45 days of Surface device purchase |
| Prepaid return shipment | ✓ | ✓ | ✓ |
| Mechanical breakdown coverage | ✓ | ✓ | ✓ |
| Accidental damage protection | | | ✓ |

This information is provided for summary purposes only. For more details on the insurer (where applicable), features and benefits of the coverage, please visit [here](#) for a copy of the protection plan terms and conditions. See the pricelist for most current pricing and availability.



Designing more sustainable products and packaging

Minimizing environmental impact

Surface devices are integral to achieving Microsoft's sustainability commitments by reducing carbon emissions and waste in our products and packaging designs.^{1,2} Microsoft is committed to becoming carbon negative and achieving 100% recyclable devices and device packaging by 2030.³

Refurbishment and recycling

Microsoft supports multiple reuse, refurbishment, and recycling programs around the world that cover our consumer devices, batteries, and packaging.⁴



From design to manufacturing to recovery

Surface Laptop SE is ENERGY STAR certified, increasingly repairable, easy to update, multifunctional (reducing the need for multiple devices), and can be recycled at the end of its life.

Recyclable packaging

Surface Laptop SE packaging is made from over 77% post-consumer recycled content and is over 97% recyclable.⁵





Surface Laptop SE for Education

Starting at
\$249.99

US MSRP for dual core or
\$329.99 US MSRP for
quad core



FEATURES:

Modern processor and eMMC storage to ensure everyday tasks load and run quickly, making opening apps and editing content a breeze.

Immersive screen, audio, and video with a brilliant 11.6" display, front-facing 720p HD camera, digital mic, and stereo speakers.

Long battery life so you can be confident in carrying Laptop SE to power your creativity, ideas, and productivity throughout your work or school day.¹

Get connected with USB-C™ and USB-A ports for connecting to displays and docking stations or charging accessories, plus a tried and true 3.5mm audio jack.

An operating system made for education with Windows 11 SE, including accessibility features, full Office 365 experiences,² and UI enhancements.

Apps and policies pre-installed and preconfigured so you can enroll and go, saving time for IT during the deployment process.²

Protection from chip to cloud with Microsoft Endpoint Manager and DFCL, and management down to the firmware level with Windows Autopilot and Intune.²

Device safety with the Kensington Nano Security Slot™ to control physical access and simple and effective lid-lock to lock the operating system when the laptop is closed.

1. Battery life varies significantly based on usage, network and feature configuration, signal strength, settings and other factors. See aka.ms/SurfaceBatteryPerformance for details. 2. Requires qualifying Microsoft 365 or Office 365 license; sold separately.

Accessories for Surface Laptop SE*

Gumdrop Protective Case



Protect your Surface Laptop SE with the case that can take whatever you can dish out.

O

Gumdrop Headset



Gumdrop Headsets are tough enough to withstand heavy use, with a twistable non-break headband and durable earpads that easily wipe clean.

O

Kensington Lock



MicroSaver 2.0 secondary lock head with T-Bar Locking Technology secures peripheral accessories featuring the industry-standard Kensington Security Slot.

O

Kensington SD1610P USB-C Mini Hub



Whether in a temporary workspace or a conference room, the SD1610P keeps users productive and powered up.

D

Aver Charging Cart



Save time, charge devices smarter. Quickly charge Surface laptops and 2-in-1s with the C36i+ adaptive charging technology.

O

Aver Document Camera



The M5 distance learning document camera is a plug-n-play, easy-to-use, yet high-quality document camera.

O

Moshi USB-C Multimedia Adapter



Expand the versatility of your USB-C® ports with HDMI, VGA, USB-A, and 3.5 mm audio adapters.

D

Moshi USB-C HDMI Adapter



USB-C to HDMI Adapter is a next-generation 4K solution that enables the output of ultra-high-definition video and digital audio to your Ultra HD TV or monitor.

D

JCPal Jasper Executive Sleeve



USB-C to Gigabit Ethernet Adapter enables any laptop equipped with a USB-C port to establish a fast and reliable wired internet connection.

D

Moshi USB-C to DisplayPort Cable



Easily connect your device to a 5K DisplayPort monitor to enjoy crystal clear, blur-free video as well as multi-channel digital surround sound.

D

Moshi USB-C Monitor Cable



Full-function cable certified by the USB-IF so you can transfer power, data and multimedia content at blazing speeds up to 10 Gbps.

D

Moshi USB-C Cable with Smart LED



Durable and intelligent cable features a smart LED to conveniently indicate charging status.

D

JCPal VerSkin Keyboard Protector



Type confidently with easy-to-read large print letters, black backing material and color-coded keys that improve key contrast and recognition.

K

Kensington Expert Trackball Mouse



The Expert Mouse Wired Trackball is the ultimate productivity enhancer that makes working at the desk quicker, more accurate, and extremely comfortable for your hand and wrist.

M

*Sold separately.



Learn more

Pugh Computers
01974 200 201
sales@pugh.co.uk



Technical specifications: Surface Laptop SE for Education

| | |
|--------------------------|---|
| Dimensions | 11.17" x 7.6" x 0.70" (283.70 mm x 193.05 mm x 17.85 mm) |
| Display | <ul style="list-style-type: none">• Screen: 11.6" TFT Liquid Crystal Display Module• Display Resolution: 1366 x 768 (135 PPI)• Aspect Ratio: 16:9 |
| Memory | 4GB or 8GB DDR4 |
| Processor | <ul style="list-style-type: none">• Intel® Celeron® Processor N4020 / Intel® UHD Graphics 600• Intel® Celeron® Processor N4120 / Intel® UHD Graphics 600 |
| Security | <ul style="list-style-type: none">• Firmware TPM across all configurations (Commercial)• Nano Security Lock slot |
| Software | <ul style="list-style-type: none">• Windows 11 SE• Microsoft 365 for Education³ |
| Sensors | 1 x Hall-effect sensor |
| What's in the box | <ul style="list-style-type: none">• Surface Laptop SE• Power Supply• Quick Start Guide• Safety and warranty documents |
| Weight | 2.45 lb (1,112.4 gr) |

| | |
|----------------------------------|--|
| Storage¹ | 64GB or 128GB Embedded MultiMedia Card (eMMC) |
| Battery life² | Up to 16 hours of battery life based on typical Surface device usage |
| Graphics | Integrated Graphics |
| Connections | <ul style="list-style-type: none">• 1 x USB-A• 1 x USB-C• 1 x Barrel type DC connector• 1 x 3.5 mm Headphone/Mic Jack |
| Cameras, video, and audio | <ul style="list-style-type: none">• 1MP Front facing camera with up to 720p 30fps video• 2W Stereo Speakers• Single digital microphone |
| Wireless | <ul style="list-style-type: none">• Wi-Fi: 802.11ac (2x2)• Bluetooth Wireless 5.0 LE |
| Exterior | <ul style="list-style-type: none">• Casing: All plastic body unpainted• Colors: Glacier• Physical buttons: Power button and Volume buttons on Keyboard• Hinge: 135 degrees open angle |
| Warranty⁴ | 1-year limited hardware warranty |

Introducing new device-based licenses for Microsoft 365

Everything you need to unlock limitless learning. See aka.ms/edu930 for more information.

New device-based offers provide a simple, single transaction for schools buying new Windows devices that lasts for up to 6 years.

Microsoft Teams, Office 365, and OneNote Class Notebooks provide learning experiences that support offline capabilities to meet the needs of all learners.

Student-centered toolkits for future-ready skills at any age with Minecraft, Flipgrid, and Teams features like Reading Progress and Reflect.

Microsoft 365 "A1"



Microsoft 365 Apps



Intune Management



Minecraft: Education Edition

Offer Summary

"P1" Offer Details

- \$38 'one-time' pricing for up to 6 years of services on a specific device
- **Single SKU:** One orderable SKU on Pricelist
- Supports 1:1 scenarios

Availability

- Pricelist Preview 10/1, General Availability 11/1
- CSP

Surface device family



Surface Laptop SE

Give students an affordable clamshell device that unlocks learning and brings value to schools and that demand secure, premium experiences for students.



Surface Laptop Go

The lightest Surface laptop, Surface Laptop Go balances performance and battery life with the speakers, mics, and camera students need to stay connected to their classrooms.



Surface Go 3*

Delivering the experience of both a laptop and a tablet, Surface Go is the most portable Surface device—now faster than before with a better processor and optional LTE Advanced (coming soon).¹

Windows 11 SE

Windows 11 SE optimizes performance with curated, education-first apps designed to run well on budget-friendly devices.



Reimagined for a new era of digital learning, Windows 11 helps unlock the full potential of every student with powerful tools to learn, collaborate, and create in a secure and inclusive environment.

*For customers in the United States and Canada, Surface Go 3 with LTE Advanced is coming soon. For customers outside the United States and Canada, Surface Go 3 with LTE Advanced is coming in 2022. Availability may vary by market and configuration. Visit Surface.com for updates on availability in your market. This device has not been authorized as required by the UK Electromagnetic Compatibility Regulations; actual sale in the UK and delivery is subject to compliance with applicable regulatory and marking requirements.